

# Romacón -korjausliittimet

# Romaccon Repair Clamp Type RS-0

# ROMACCON<sup>®</sup>

Romaccon stainless steel repair clamps Style RS-0 are used for permanent repairs of broken and damaged pipes

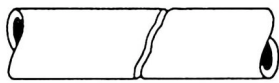
for water, gas and petrochemical fluids



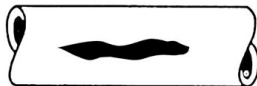
Following types of damage can be repaired:



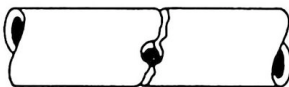
Pipe longitudinal connection



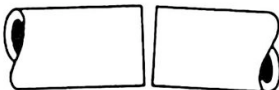
Damage due to broken pipes



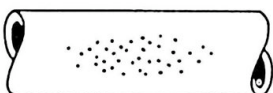
Longitudinal crack



Cracked pipe after hot tap



Misaligned pipes



Pit holes

The clamps can be used to repair the following pipe types:

- Ductile Iron (DI)
- Cast Iron (CI)
- Steel (St.)
- Asbestos Cement (AC)
- PE coated steel
- PVC\*
- GRP\*
- PE\*

\* If pipe repair clamps are to be used on plastic pipes, please always contact Romaccon or a Romaccon distributor for more information regarding the application and restrictions on these pipe types.

Romaccon repair clamps should be used under following conditions:

- For PVC pipes, the width of the clamps should be 50 % longer and bolt torque should be reduced by 50 %. We prefer that you consult your Romaccon distributor.
- The maximum allowable distance between two pipe ends should not exceed 10 mm.
- The maximum allowable deflection is 2 degrees.
- The maximum allowable offset should not exceed 3 mm.

The RS-0 repair clamp is in fact a small version of the RS-1 repair clamp, having a range of max. 4 mm. The clamp is used on pipes for which RS-1 clamps are not available due to the small pipe diameter.

RS-0 is available for pipe nominal diameters 1/2" up to 2".

Available length 75 and 150 mm

# Romaccon Repair Clamp Type RS-0

## Material specification:

- All metal parts: stainless steel AISI 304 or AISI316L.
- Metal parts have been deburred and are passivated to restore the corrosion resistance to its original state after the welding process.
- Single band (one section) with a working range of max. 4 mm. For an overview of all working ranges please see our pricelist.
- Standard certified rubber gaskets EPDM or NBR. The rubber is tapered and has a waffle pattern.
- Seamless rubber lining for every clamp diameter
- Bridge plate is vulcanized into the rubber gasket
- U-shaped lifter bar.
- Bolts are PTFE (Teflon™) coated to prevent galling.
- Stainless steel washers.
- No loose parts that may get lost during installation.
- No special tools required: a simple wrench will do the job.
- Special tape is used to fix the rubber gasket to the stainless steel band. This tape is flexible and reinforced with glass fibre thread to withstand hot and humid conditions and guarantee a long storage capability.
- Under most circumstances the clamps can be installed without releasing the pressure on the pipe.
- The clamps are packed into strong double-rib cartons. For export overseas we use strong, seaworthy crates



The vulcanized bridge plate guarantees a leakproof sealing

## Available sizes:

Romaccon RS-0 clamps are available several different working ranges for pipes of ND 1/2" – ND 2". Please consult our pricelist for more details on the working ranges. Available lengths: 75 and 150 mm.

## Pressure ratings:

Pressure ratings for water \*\* depend on the type of break or damage, pipe OD, medium etc. In general, RS-0 clamps can resist a working pressure of 20 bars.

*\*\* Please contact Romaccon or your distributor for more information regarding pressures on gas pipes.*

## Available rubber gaskets:

Romaccon clamps can be supplied with the following types of rubber:

EPDM -1	- potable water - waste water	max 55 degr. C.
EPDM -2	- potable water - waste water	max 140 degr. C.
NBR	- natural gas - potable water - waste water	max 80 degr. C.
Viton	- several chemicals pls contact Romaccon	pls. contact Romaccon
Silicone	- several chemicals pls contact Romaccon	pls. contact Romaccon

Our rubber gaskets are certified to European standards, such as ACS (France) and WRAS (UK). Please contact us for a detailed list of current certifications.



Romaco has been certified to ISO 9001:2000 by Tuv

# Romaccon Repair Clamp Type RS-1

# ROMACCON®

Romaccon stainless steel repair clamps Style RS-1 are used for permanent repairs of broken and damaged pipes

for water, gas and petrochemical fluids



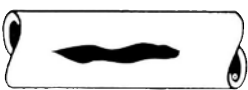
Following types of damage can be repaired:



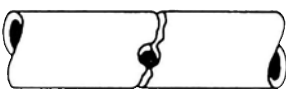
Pipe Longitudinal connection



Broken Damage due pipes



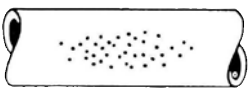
Misaligned cracks



Pin to hot taps



pipes



holes

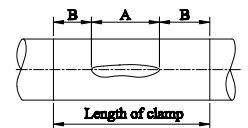
The clamps can be used to repair the following pipe types:

- Ductile Iron (DI)
- Cast Iron (CI)
- Steel (St.)
- Asbestos Cement (AC)
- PE coated steel
- PVC\*
- GRP\*
- PE\*

\* If pipe repair clamps are to be used on plastic pipes, please always contact Romaccon or a Romaccon distributor for more information regarding the application and restrictions on these pipe types.

Romaccon repair clamps should be used under following conditions:

- The width of the clamp should be at least equal to the pipe OD.
- The width of the clamp should be 150 mm greater than the length of any crack on pipes with an outside diameter up to 350 mm. On larger pipes this should be at least 200 mm.
- For PVC pipes, the width of the clamps should be 50 % longer and bolt torque should be reduced by 50 %. We prefer that you consult your Romaccon distributor.
- The maximum allowable distance between two pipe ends should not exceed 10 mm.
- The maximum allowable deflection is 2 degrees.
- The maximum allowable offset should not exceed 3 mm.



# Romaccon Repair Clamp Type RS-1

## Material specification:

- All metal parts: stainless steel AISI 304 or AISI 316L.
- Metal parts have been deburred and are passivated to restore the corrosion resistance to its original state after the welding process.
- Single band (one section) with a working range of 7–11 mm depending on the diameter. For an overview of all working ranges please see our pricelist.
- Standard certified rubber gaskets EPDM or NBR. The rubber is tapered and has a waffle pattern.
- Seamless rubber lining for every clamp diameter
- Bridge plate is vulcanized into the rubber gasket
- U-shaped lifter bar.
- Bolts are PTFE (Teflon™) coated to prevent galling.
- Stainless steel washers.
- No loose parts that may get lost during installation.
- No special tools required; a simple wrench will do the job.
- Special tape is used to fix the rubber gasket to the stainless steel band. This tape is flexible and reinforced with glass-fibre thread to withstand hot and humid conditions and guarantee a long storage capability.
- Under most circumstances the clamps can be installed without releasing the pressure on the pipe.
- The clamps are separately packed into strong double-rib cartons. For export overseas we use strong, seaworthy crates



The vulcanized bridge plate guarantees a leakproof sealing

## Available sizes

Romaccon RS-1 clamps are available in many different working ranges for pipes of ND 40 – ND 350. Please consult our pricelist for more details on the working ranges. Available lengths: 150 / 200 / 250 / 300 / 400 / 500 / 600 mm.

## Pressure ratings

Pressure ratings for water \*\* depend on the type of break or damage, pipe OD, medium etc.  
Pipe ND 40 up to including ND 150: 16 bar  
Pipe ND 175 up to including ND 300: 10 bar  
Our clamps can be modified to cope with higher working pressures.

\*\* *Please contact Romaccon or your distributor for more information regarding pressures on gas pipes.*

## Available rubber gaskets

Romaccon clamps can be supplied with the following types of rubber:

EPDM	– potable water – wastewater	max 55 degr. C
EPDM	– potable water – wastewater	max 140 degr. C
NBR	– natural gas – potable water max – wastewater	Max 80 degr. C
Viton	– several chemicals pls contact Romaccon	pls contact Romaccon
Silicone	– several chemicals pls contact Romaccon	pls contact Romaccon

Our rubber gaskets are certified to European standards, such as ACS (France) and WRAS (UK). Please contact us for a detailed list of current certifications.



Romaccon has been certified to ISO 9001–2000 by TÜV

**ROMACCON®**

# Romaccon Repair Clamp Type RS-2

# ROMACCON®

Romaccon stainless steel repair clamps Style RS-2 are used for permanent repairs of broken and damaged pipes

**for water, gas and petrochemical fluids**



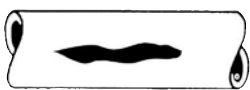
Following types of damage can be repaired:



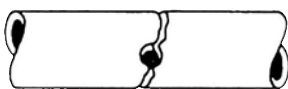
Pipe Longitudinal connection



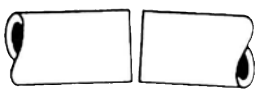
Broken Damage due pipes



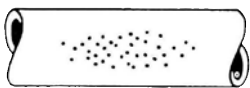
Misaligned cracks



Pin to hot taps



pipes



holes

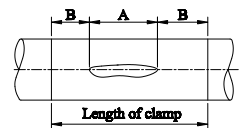
The clamps can be used to repair the following pipe types:

- Ductile Iron (DI)
- Cast Iron (CI)
- Steel (St.)
- Asbestos Cement (AC)
- PE coated steel
- PVC\*
- GRP\*
- PE\*

\* If pipe repair clamps are to be used on plastic pipes, please always contact Romaccon or a Romaccon distributor for more information regarding the application and restrictions on these pipe types.

Romaccon repair clamps should be used under following conditions:

- The width of the clamp should be at least equal to the pipe OD.
- The width of the clamp should be 150 mm greater than the length of any crack on pipes with an outside diameter up to 350 mm. On larger pipes this should be at least 200 mm.
- For PVC pipes, the width of the clamps should be 50 % longer and bolt torque should be reduced by 50 %. We prefer that you consult your Romaccon distributor.
- The maximum allowable distance between two pipe ends should not exceed 10 mm.
- The maximum allowable deflection is 2 degrees.
- The maximum allowable offset should not exceed 3 mm.



# Romaccon Repair Clamp Type RS-2

## Material specification:

- All metal parts: stainless steel AISI 304 or AISI 316L.
- Metal parts have been deburred and are passivated to restore the corrosion resistance to its original state after the welding process.
- Double band (two sections) with a working range of 20–22 mm depending on the diameter. For an overview of all working ranges please see our pricelist.
- Standard certified rubber gaskets EPDM or NBR. The rubber is tapered and has a waffle pattern.
- Seamless rubber lining for every clamp diameter
- Bridge plates are vulcanized into the rubber gasket
- U-shaped lifter bars.
- Bolts are PTFE (Teflon™) coated to prevent galling.
- Stainless steel washers.
- No loose parts that may get lost during installation.
- No special tools required; a simple wrench will do the job.
- Special tape is used to fix the rubber gasket to the stainless steel band. This tape is flexible and reinforced with glass-fibre thread to withstand hot and humid conditions and guarantee a long storage capability.
- Under most circumstances the clamps can be installed without releasing the pressure on the pipe.
- The clamps are separately packed into strong double-rib cartons. For export overseas we use strong, seaworthy crates



The vulcanized bridge plate guarantees a leakproof sealing

## Available sizes

Romaccon RS-2 clamps are available in many different working ranges for pipes of ND 80 – ND 800. Please consult our pricelist for more details on the working ranges. Available lengths: 200 / 250 / 300 / 400 / 500 / 600 / 750 mm.

## Pressure ratings

Pressure ratings for water \*\* depend on the type of break or damage, pipe OD, medium etc.  
Pipe ND 80 up to including ND 150: 16 bar  
Pipe ND 175 up to including ND 500: 10 bar  
Our clamps can be modified to cope with higher working pressures.

\*\* *Please contact Romaccon or your distributor for more information regarding pressures on gas pipes.*

## Available rubber gaskets

Romaccon clamps can be supplied with the following types of rubber:

EPDM	– potable water – wastewater	max 55 degr. C
EPDM	– potable water – wastewater	max 140 degr. C
NBR	– natural gas – potable water max – wastewater	Max 80 degr. C
Viton	– several chemicals pls contact Romaccon	pls contact Romaccon
Silicone	– several chemicals pls contact Romaccon	pls contact Romaccon

Our rubber gaskets are certified to European standards, such as ACS (France) and WRAS (UK). Please contact us for a detailed list of current certifications.



Romaccon has been certified to ISO 9001–2000 by TÜV

**ROMACCON®**

# Romaccon Repair Clamp Type RS-3

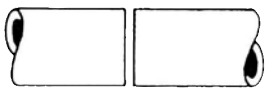
# ROMACCON®

Romaccon stainless steel repair clamps Style RS-3 are used for permanent repairs of broken and damaged pipes

for water, gas and petrochemical fluids



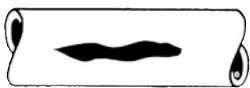
Following types of damage can be repaired:



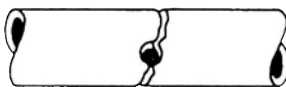
Pipe Longitudinal connection



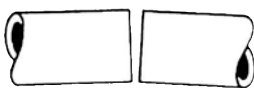
Broken Damage due pipes



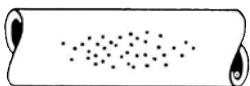
Misaligned cracks



Pin to hot taps



pipes



holes

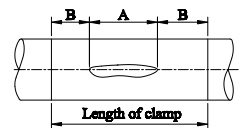
The clamps can be used to repair the following pipe types:

- Ductile Iron (DI)
- Cast Iron (CI)
- Steel (St.)
- Asbestos Cement (AC)
- PE coated steel
- PVC\*
- GRP\*
- PE\*

\* If pipe repair clamps are to be used on plastic pipes, please always contact Romaccon or a Romaccon distributor for more information regarding the application and restrictions on these pipe types.

Romaccon repair clamps should be used under following conditions:

- The width of the clamp should be at least equal to the pipe OD.
- The width of the clamp should be 150 mm greater than the length of any crack on pipes with an outside diameter up to 350 mm. On larger pipes this should be at least 200 mm.
- For PVC pipes, the width of the clamps should be 50 % longer and bolt torque should be reduced by 50 %. We prefer that you consult your Romaccon distributor.
- The maximum allowable distance between two pipe ends should not exceed 10 mm.
- The maximum allowable deflection is 2 degrees.
- The maximum allowable offset should not exceed 3 mm.





# Romaccon Repair Clamp Type RS-3

## Material specification:

- All metal parts: stainless steel AISI 304 or AISI 316L.
- Metal parts have been deburred and are passivated to restore the corrosion resistance to its original state after the welding process.
- Triple band (three sections) with a working range of 30–33 mm depending on the diameter. For an overview of all working ranges please see our pricelist.
- Standard certified rubber gaskets EPDM or NBR. The rubber is tapered and has a waffle pattern.
- Seamless rubber lining for every clamp diameter
- Bridge plates are vulcanized into the rubber gasket
- U-shaped lifter bars.
- Bolts are PTFE (Teflon™) coated to prevent galling.
- Stainless steel washers.
- No loose parts that may get lost during installation.
- No special tools required; a simple wrench will do the job.
- Special tape is used to fix the rubber gasket to the stainless steel band. This tape is flexible and reinforced with glass-fibre thread to withstand hot and humid conditions and guarantee a long storage capability.
- Under most circumstances the clamps can be installed without releasing the pressure on the pipe.
- The clamps are separately packed into strong double-rib cartons. For export overseas we use strong, seaworthy crates



The vulcanized bridge plate guarantees a leakproof sealing

## Available sizes

Romaccon RS-3 clamps are available in many different working ranges for pipes of ND 250 – ND 1.000. Please consult our pricelist for more details on the working ranges. Available lengths: 300 / 400 / 500 / 600 / 750 mm. If you need to repair larger pipes we can offer 4 band or 5 band clamps. Please contact us for more information.

## Pressure ratings

Pressure ratings for water \*\* depend on the type of break or damage, pipe OD, medium etc.

Pipe ND 250 up to including ND 500: 6 bar

ND 500 and ND 600: 6 bar

ND 700: 4 bar

Please consult our pricelist for working pressures of larger pipe od's. Our clamps can be modified to cope with higher working pressures.

*\*\* Please contact Romaccon or your distributor for more information regarding pressures on gas pipes.*

## Available rubber gaskets

Romaccon clamps can be supplied with the following types of rubber:

EPDM	– potable water – wastewater	max 55 degr. C
EPDM	– potable water – wastewater	max 140 degr. C
NBR	– natural gas – potable water max – wastewater	Max 80 degr. C
Viton	– several chemicals pls contact Romaccon	pls contact Romaccon
Silicone	– several chemicals pls contact Romaccon	pls contact Romaccon

Our rubber gaskets are certified to European standards, such as ACS (France) and WRAS (UK). Please contact us for a detailed list of current certifications.



Romaccon has been certified to ISO 9001-2000 by TÜV

# Romaccon Repair Clamp Type RS-C

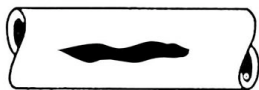
# ROMACCON<sup>®</sup>

Romaccon stainless steel repair clamps Style RS-C are used for permanent repairs of damaged pipes

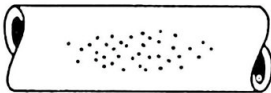
for water, gas and petrochemical fluids



Following types of damage can be repaired:



cracks / local damage



Pit holes

The RS-C Clamp is designed for pipes with DN 50 up to and including DN 300

RS-C clamps can be used as an economical alternative to RS-1 clamps, **but only for local damages.**

The clamps can be used to repair the following pipe types:

- Ductile Iron (DI)
- Cast Iron (CI)
- Steel (St.)
- Asbestos Cement (AC)
- PE coated steel
- PVC\*
- GRP\*
- PE\*

\* If pipe repair clamps are to be used on plastic pipes, please always contact Romaccon or a Romaccon distributor for more information regarding the application and restrictions on these pipe types.

Available sizes:

Romaccon RS-C clamps are available in several different working ranges for pipes of ND 50 up to including ND 300. Please consult our pricelist for more details on the working ranges.

Available lengths: 100 / 150 and 200 mm.

Pressure ratings:

Pressure ratings for water \*\* depend on the type of break or damage, pipe OD, medium etc.

In general, RS-C clamps can resist a working pressure of 16 bar for pipes up to ND 150 and 10 bar for pipes with ND > 150.

\*\* Please contact Romaccon or your distributor for more information regarding pressures on gas pipes.

# Romaccon Repair Clamp Type RS-C

## Material specification:

- All metal parts: stainless steel AISI 304 or AISI316L.
- Metal parts have been deburred and are passivated to restore the corrosion resistance to its original state after the welding process.
- Single band (one section) half circle clamp with a working range between 4 and 11 mm, depending on the diameter. For an overview of all working ranges please see our pricelist.
- Standard certified rubber gaskets EPDM or NBR. The rubber is tapered and has a waffle pattern.
- Bridge plate is vulcanized into the rubber gasket
- U-shaped lifter bar.
- Bolts are PTFE (Teflon™) coated to prevent galling.
- Stainless steel washers.
- No loose parts that may get lost during installation.
- No special tools required: a simple wrench will do the job.
- Special tape is used to fix the rubber gasket to the stainless steel band. This tape is flexible and reinforced with glass fibre thread to withstand hot and humid conditions and guarantee a long storage capability.
- Under most circumstances the clamps can be installed without releasing the pressure on the pipe.
- The clamps are packed into strong double-rib cartons. For export overseas we use strong, seaworthy crates



The vulcanized bridge plate guarantees a leakproof sealing

## Available rubber gaskets:

Romaccon clamps can be supplied with the following types of rubber:

EPDM -1	- potable water - waste water	max 55 degr. C.
EPDM -2	- potable water - waste water	max 140 degr. C.
NBR	- natural gas - potable water - waste water	max 80 degr. C.
Viton	- several chemicals pls contact Romaccon	pls. contact Romaccon

Our rubber gaskets are certified to European standards, such as ACS (France) and WRAS (UK).

Please contact us for a detailed list of current certifications.



Romaccon has been certified to ISO 9001:2000 by Tuv



## Myynti

Vantaa Pyymosantie 4 01720 Vantaa	Turku Polttolaitoksenkatu 5 20380 Turku	Tampere Lentokentänkatu 9 C 33900 Tampere	Oulu Revontie 2 90830 Haukipudas
---	---	---	--

## Huolto ja kokoonpano

Vantaa Pyymosantie 4 01720 Vantaa	Turku Polttolaitoksenkatu 5 20380 Turku	Puh. 010 8345 500 power.hydraulics@masino.fi www.masino.fi/masino-konaflex
---	---	--

Masino Group on yritysryhmä, joka tarjoaa voimansiirtoratkaisuja, hydraulikkaa ja suodatus-tekniikkaa, pumppuja, puhaltimia ja teollisuushuoltoa, putkistotuotteita, kiinnitystekniikkaa, hitsaustekniikkaa, juotostekniikkaa, kallionlujitustuotteita, betonikuituja sekä talotekniikan kiinnitys- ja asennustarvikkeita. Liikevaihtomme on noin 65 M€ ja henkilöstön määrä 160. Toimipisteemme sijaitsevat Vantaalla (2), Ylöjärvellä, Tampereella ja Turussa.