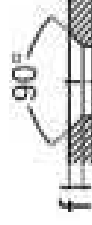
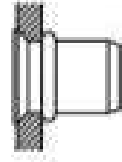
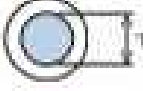
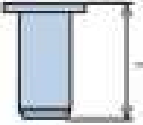
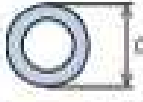

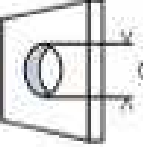
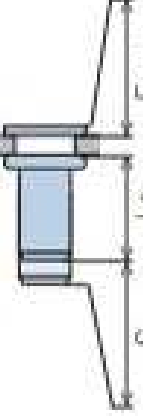



RIVKLE® – Standard blind rivet nuts - Steel

Steel | Countersunk head | Plain | Open



										
	d (mm)	L (mm)	B (mm)	B (mm) (max - min)	$\varnothing_{\text{chamfer}}$ (mm)	f (mm)	S (mm)	L ₂ (mm)	E _{chamfer} (mm)	
M3		8,3		1,0 - 1,5		0,9	S=2,8-e	5,4	1,0	233 11 030 015
		8,8	6,6	1,5 - 3,0	5,0	1,3	S=4,3-e	4,8	1,4	233 11 030 030
		10,3		3,0 - 4,5			S=4,9-e	4,7		233 11 030 045
M4		9,8	7,2	1,0 - 2,0		0,9	S=3,7-e			233 11 040 020
		10,4	7,8	2,0 - 3,0	6,0	1,3	S=4,7-e	5,4	0,1	233 11 040 030
		11,8		3,0 - 5,0			S=6,6-e			233 11 040 050
M5		13,8	8,0	5,0 - 7,0			S=8,4-e	5,3		233 11 040 070
		13,7	9,2	1,5 - 4,0	7,0	1,5	S=6,5-e	8,0		233 11 050 040
		16,7	9,6	4,0 - 6,5			S=8,1e	8,6	0,1	233 11 050 065
M6		19,8		6,5 - 9,0			S=10,7-e	9,0		233 11 050 090
		17,3	11,3	1,5 - 4,0	9,0	1,5	S=6,2-e	10,0		233 11 060 040
		20,3		4,0 - 6,5			S=8,7-e		0,1	233 11 060 065
M8		21,8	11,7	6,5 - 9,0			S=10,4-e	11,4		233 11 060 090
		17,8		1,5 - 4,0	11,0	1,5	S=7,0-e			233 11 080 040
		20,8	13,1	4,0 - 6,5			S=9,5-e	11,0	0,1	233 11 080 065
M10		23,75		6,5 - 9,0			S=12,0-e			233 11 080 090
		21,8	15,1	1,5 - 4,0	13,0	1,5	S=8,4-e	15,0	0,1	233 11 100 040
		24,75		4,0 - 6,5			S=8,4-e			233 11 100 065
M12		28,0	15,5	6,5 - 9,0			S=11,5-e	14,8		233 11 100 090
		25,9		1,7 - 4,5	16,0	1,7	S=8,2-e	17,5	0,1	233 11 120 045
		28,0	19,0	4,5 - 7,5			S=9,7-e			233 11 120 075
	31,8		7,5 - 10,5				S=13,7-e	18,0		233 11 120 105